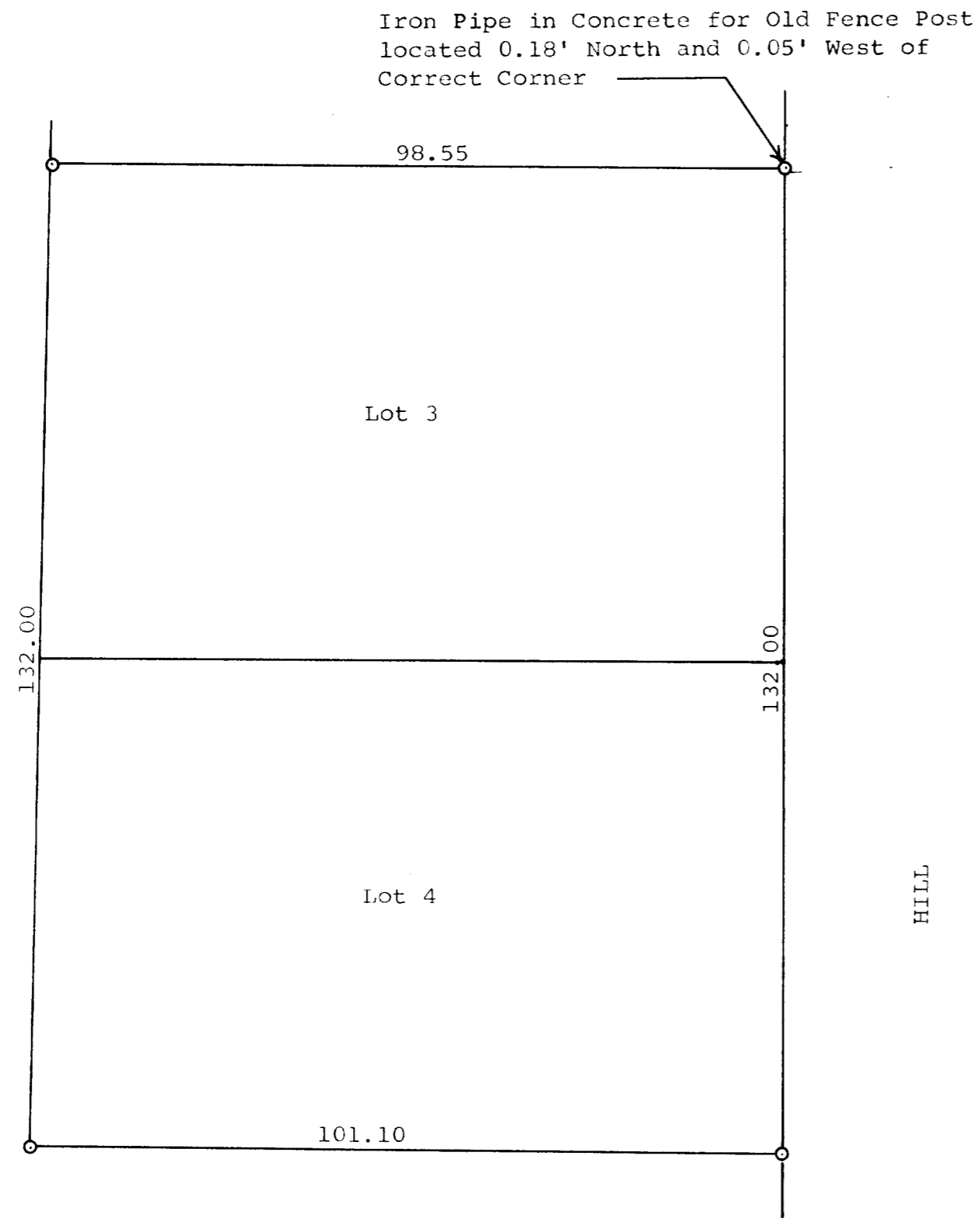


GEORGE T. DUNHAM  
SURVEYING & SUBDIVIDING  
DELAVER, WISCONSIN



N

Scale - 1" = 20'  
○ = Iron Pipe

STATE OF WISCONSIN) ss  
WALWORTH COUNTY )

I, George T. Dunham, Surveyor, do certify that I have  
surveyed the property described as follows,

Lots 3 and 4 in Block 14 of William's Second Addition  
to Williams Bay, Walworth County, Wisconsin,  
and that the above plat is an accurate and a true representation  
thereof and correctly shows the boundary lines and the correct  
measurements thereof.

March 23, 1970

*George T. Dunham*  
George T. Dunham, Surveyor

11-49

WOP-204